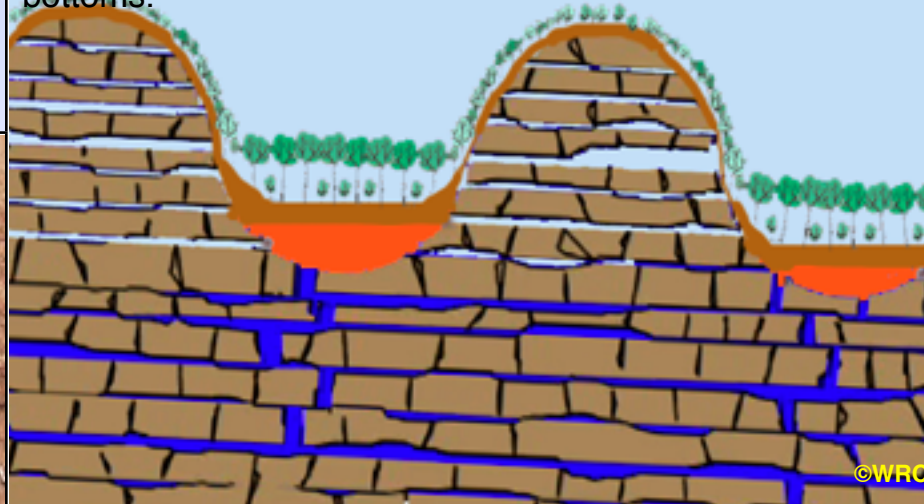


SAVE COCKPIT COUNTRY

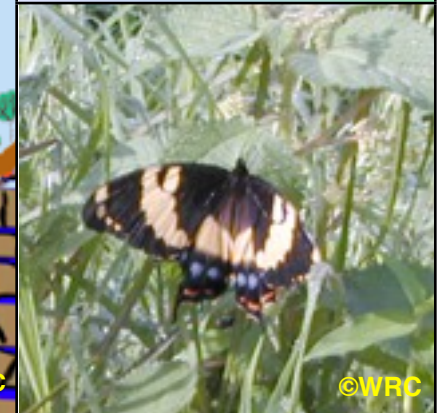
The high humidity (~100%) in the cockpit sinks, with no surface water, has led to special adaptations and examples of parental care which are found nowhere else in the World.



“Each hill is an Island”: soil is acidic on summits, thin and alkaline on talus slopes and rich and neutral on cockpit bottoms.



The Giant Swallowtail Butterfly (largest in the New World) needs near-100% humidity at all stages of its life.



About 1/4 of Jamaica’s *endemic* plants are found in Cockpit Country:- 215 of 828 in all.
And 65 of these are **only** found in Cockpit County and nowhere else in the World!

The features of a karst landscape depend on the interaction between the components of this system: water, air, soil, rock, life, energy and time. The integrity of karst systems depends on the preservation of this interaction. If the balance is upset by sudden changes in one or more components, the whole system may be disrupted.

Vermeulen and Whitten 1999

